

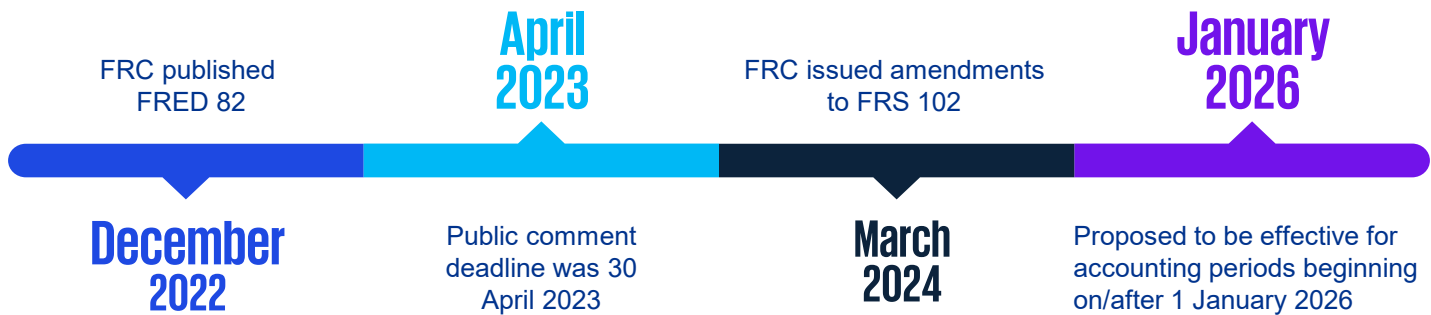


Upcoming changes to FRS 102

It's time to review your revenue and lease arrangements



The amendments to FRS 102 will be effective on or after 1 January 2026*, with early adoption permitted:



* The amendments for supplier finance arrangements will be effective from 1 January 2025.

Key changes



Leases

- Based on IFRS 16 Leases: on-balance sheet lease accounting for lessees, as a right of use (RoU) asset and lease liability.
- Lease expenses now presented as depreciation and interest. Impacting EBITDA and key metrics.
- Exemptions available for short-term leases and leases of low-value assets.
- Key simplifications from IFRS 16:
 - Contracts with multiple components as a single lease.

Transition:

- No restatement of comparatives required.
- Permitted to use carrying amounts for group reporting under IFRS 16 as opening balances.
- If not applying the group exemption, asset recognised is equal to the liability on transition. Any cumulative effect of initially applying the standard is recorded as an adjustment to opening retained earnings.



Revenue

- Based on IFRS 15 Revenue from Contracts with Customers: Five-step revenue recognition model.
- Entities will need to review revenue contracts and apply the five-step model potentially impacting timing of revenue recognition.
- In particular, will need to consider the treatment for contracts that have bundles of goods/services, variable consideration, warranties, customer options, or significant financing components.
- Key simplifications from IFRS 15:
 - Accounting policy choice in respect of the capitalisation of costs to obtain a contract.
 - A simplified decision tree for license revenue.
 - May apply the five-step model to a portfolio of similar contracts.
 - Simplifications for allocating discounts and contract modifications.
 - Simplified agent vs principal decisions.

Transition:

- No restatement of comparatives required.
- Only need to apply the guidance to contracts open at transition date and thereafter.

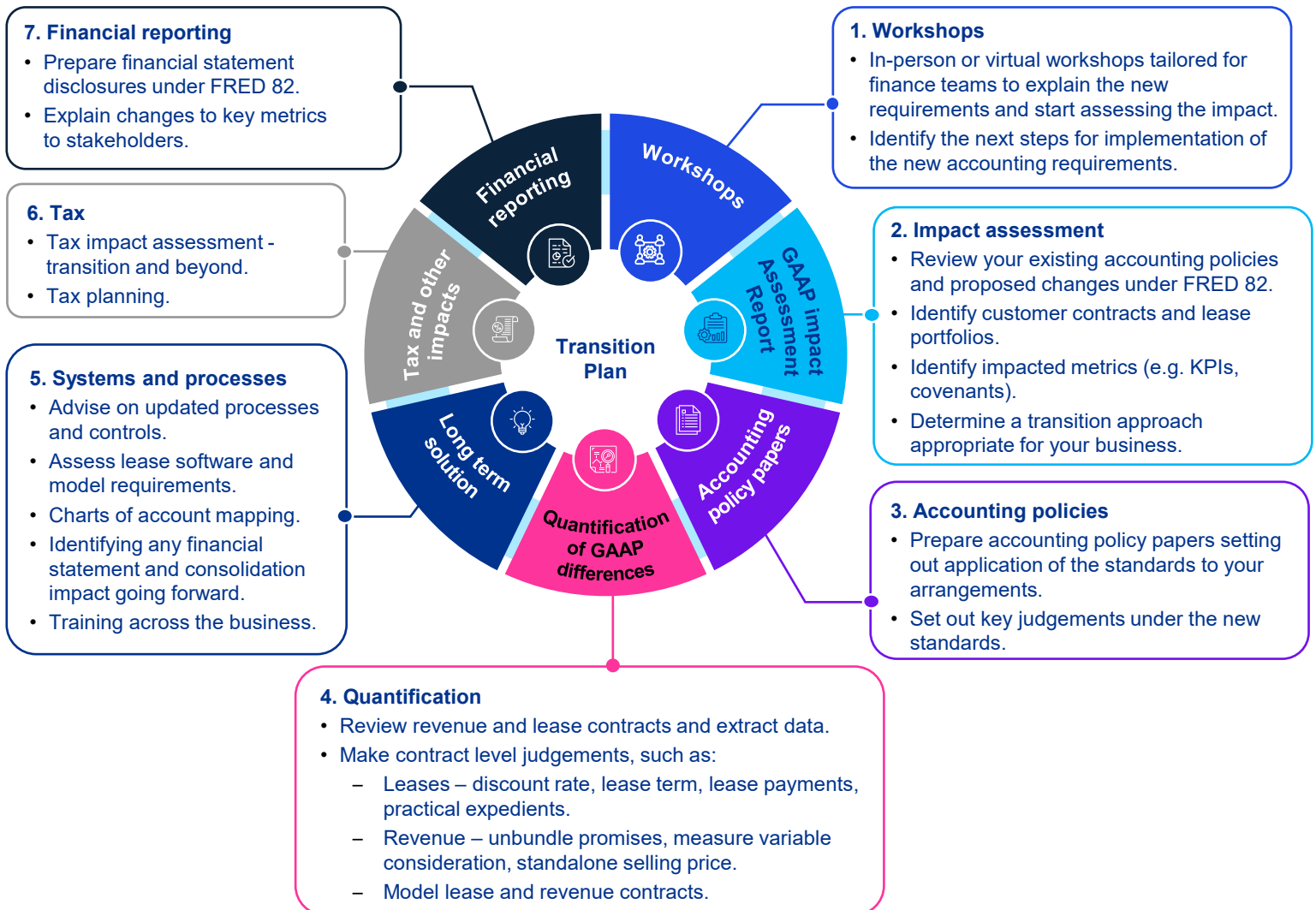
Other changes



- New sections aligning with the IASB's Conceptual Framework, the principles of IFRS 13: Fair Value Measurement and IFRIC 23 uncertain tax positions.
- Clarity for small entities applying Section 1A on disclosures to be provided in order to give a true and fair view.
- Disclosure requirements on supplier finance arrangements have been introduced, which are effective from reporting periods beginning on or after 1 January 2025 (early application permitted).

How can we help?

We offer a range of services to help you prepare for these changes. We offer a streamlined package or individual services depending on the needs of your business.



Simon Cooper

Partner, Accounting Advisory Services
T: +44 115 9353452
E: Simon.Cooper@KPMG.co.uk



Ian Greenwood

Partner, Accounting Advisory Services
T: +44 7716 304047
E: Ian.Greenwood@KPMG.co.uk



Tatiana Markova

Senior Manager, Accounting Advisory Services
T: +44 7825 902776
E: Tatiana.Markova@kpmg.co.uk



Liang Zhang

Director, Modelling
T: +44 7831 516536
E: Liang.Zhang@KPMG.co.uk



Elizabeth Elsworth

Partner, Tax
T: +44 7795 645695
E: Elizabeth.Elsworth@KPMG.co.uk



Some or all of the services described herein may not be permissible for KPMG audit clients and their affiliates or related entities

The information contained herein is of a general nature and is not intended to address the circumstances of any particular individual or entity. Although we endeavour to provide accurate and timely information, there can be no guarantee that such information is accurate as of the date it is received or that it will continue to be accurate in the future. No one should act on such information without appropriate professional advice after a thorough examination of the particular situation.

© 2024 KPMG LLP, a UK limited liability partnership and a member firm of the KPMG global organisation of independent member firms affiliated with KPMG International Limited, a private English company limited by guarantee. All rights reserved.

The KPMG name and logo are trademarks used under license by the independent member firms of the KPMG global organisation.

CREATE. | May 2024 | CRT148459J

Document Classification: **KPMG Confidential**