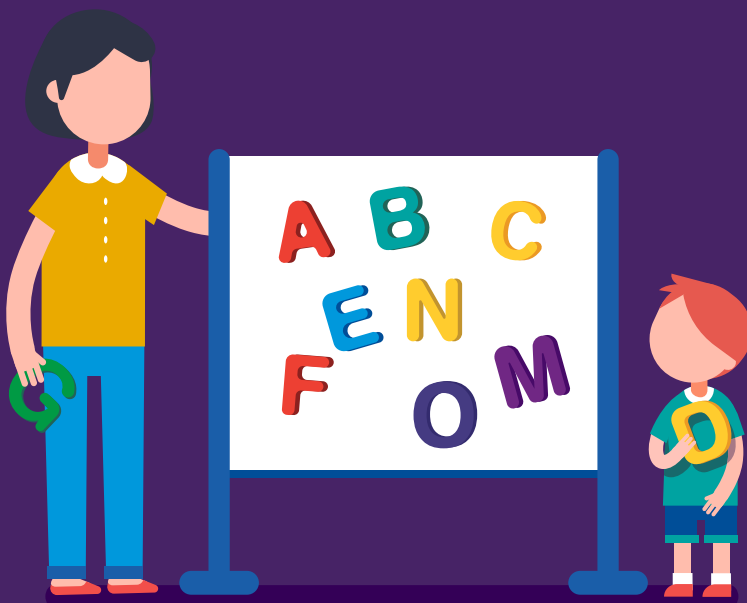

Finding childcare in Luxembourg

In Luxembourg you are entitled to 20 weeks' maternity leave — eight weeks before the estimated delivery date and 12 weeks after delivery — and four to six months' parental leave. Under certain circumstances, you can take part-time parental leave instead for longer. Fathers are entitled to up to 10 days' paternity leave.





Day care (crèches)

- From three months to four years of age, before compulsory schooling starts, a child can be placed in a crèche or daycare center. These can be run by the local government, semi-privately or privately.
- Public crèches are open from 7:30am to 6:30pm and children who are ill should not attend.
- There is a wide range of educational styles and concepts on offer, including organic-approach crèches, company crèches, multilingual crèches and woodland crèches (Bëschcrèche), amongst others.
- There are no night-time crèches in the Grand Duchy as per law.
- In response to Luxembourg’s high demand for childcare, companies in the daycare sector can offer mini-crèche services by request since 7 January 2019. Each mini-crèche can look after a maximum of 11 children up to 12 years of age, with a maximum of four children aged one or under.



Day nurseries

- Day nurseries cater for children aged two months to 8 years for up to 16 hours per week. Like crèches, they can be run by local government, semi-privately or privately.
- A multilingual education program for one to four-year-old children was recently introduced.



Day centers

- Day centers care for pupils aged four to 12 before and after school. They also offer activity days during school holidays.



“Maison relais” for children

Offering more flexibility than crèches and day nurseries, maison relais look after children aged three to 12 (and in some cases, up to 18). They are open from 7:00am to 7:00pm and offer childminding, meals, activities and homework help.



“Au pair” placement

Au pairs live at home with a family, minding children and helping with chores for around five hours per day. Legally, au pairs in Luxembourg must:

- Hold a valid passport.
- Be at least 18 and under 30.
- Have a certificate providing them access to higher education in their country of origin, or provide proof they have attended school until at least the age of 17.
- Sign an au pair hosting agreement with an approved host family.
- Not carry out any salaried or freelance work during their time as an au pair.



Parental assistants/childminders

Parental assistants are licensed to look after children aged 12 and under during the day and/or at night in their own homes. They provide this service on a self-employed basis.

Professional childminders may not look after more than five children at the same time, and no more than two children under the age of two. This includes the childminder’s own children.



Child benefit

All children are entitled to a monthly allowance payable from birth until the end of schooling (up to age of 25).

- €265 per month per child under six.
- €285 per month per child six to 11.
- €315 per month per child 12 and over.



Child service vouchers

The Chèque Services Accueil (CSA) — the state’s contribution towards childcare costs for children up to 12 — is paid directly to approved care providers. It is based on the family’s income, number of children and childcare hours required. Cross-border workers can also benefit from the C S A system.