

Crisis management - COVID-19

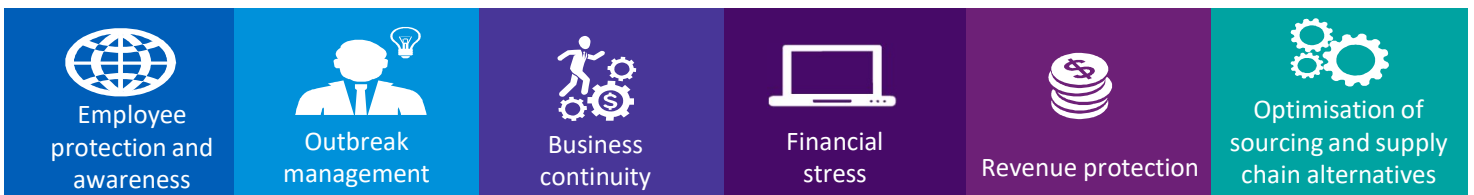


COVID-19 is, first and foremost, a humanitarian challenge. It has affected communities on multiple continents, with significant number of deaths and cases being reported. In addition to the humanitarian challenge, there are implications for the wider economy, business and employment.

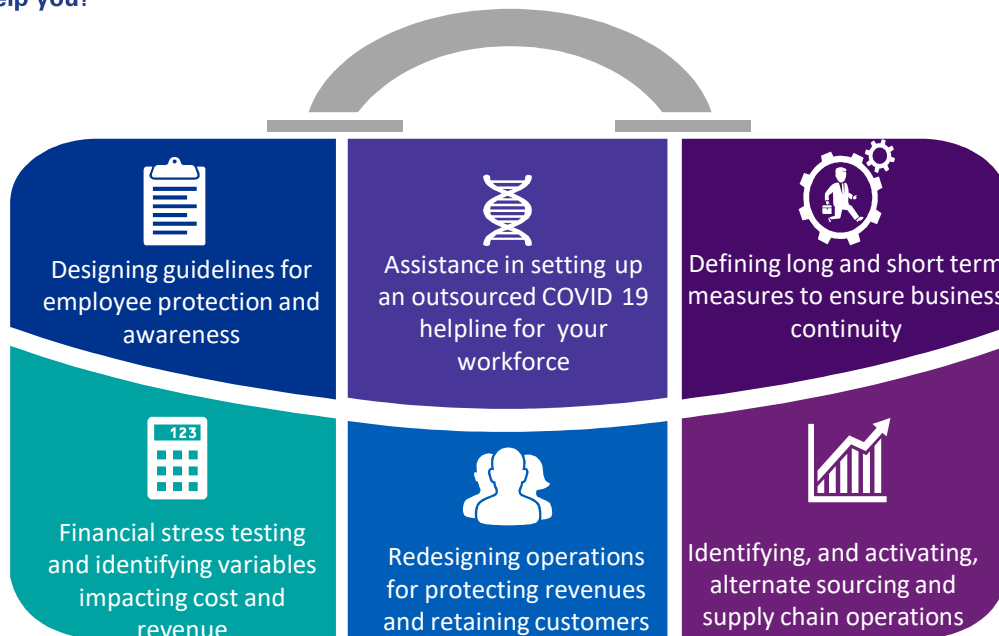
Why is this crisis an immediate impact on the economy?



Key concern areas for all employers



How can we help you?



For details contact-

Amit Kumar
Partner, Transformation
+91-9820002758
amitk4@kpmg.com

Merril Cherian
Partner, IT Advisory
+91-9900525082
mcherian@kpmg.com

Bijal Shah
Director, Risk Advisory
+91-9892129187
bvshah@kpmg.com

Devang Shah
Director, Transformation
+91-9920895544
devangshah2@kpmg.com

Follow us on:
home.kpmg/in/socialmedia



The information contained herein is of a general nature and is not intended to address the circumstances of any particular individual or entity. Although we endeavour to provide accurate and timely information, there can be no guarantee that such information is accurate as of the date it is received or that it will continue to be accurate in the future. No one should act on such information without appropriate professional advice after a thorough examination of the particular situation.

© 2020 KPMG, an Indian Registered Partnership and a member firm of the KPMG network of independent member firms affiliated with KPMG International Cooperative ("KPMG International"), a Swiss entity. All rights reserved. The KPMG name and logo are registered trademarks or trademarks of KPMG International. This document is for e-communication only.