



# Aligned & empowered workforce

## KPMG Connected Enterprise

**The Connected Enterprise has an agile organizational structure ready for anything, where teams embrace change and support the company in recruiting and attracting the right people at the right time.**

Becoming a customer-centric business will impact all aspects of your organization, from creating your vision to mapping the customer journey and deciding on changes to your business operating model. Empowering employees will mean building capability frameworks and designing the right talent lifecycle, on top of running the hiring process.

With the right experiences and capabilities, you can attract and retain the kinds of people and skills you need for your business both now and in the future. You can bolster your teams with adaptable, innovative employees who will consistently move your company forward.

### Key considerations

- How do we foster an innovative, forward-looking culture?
- How can we model and incentivize flexibility?
- What skills and training do our employees need?
- How can we attract and retain the right digital and entrepreneurial talent?

### How can KPMG help?

Building a coherent, pragmatic, customer focused people strategy

Achieving buy-in from key stakeholders and employees for the business transformation, and helping you to communicate the benefits

Aligning processes such as recruitment and talent management to reflect your customer-centric goals

Disclaimer: Some or all of the services described herein may not be permissible for KPMG audit clients and their affiliates or related entities.

## Learning to make people better

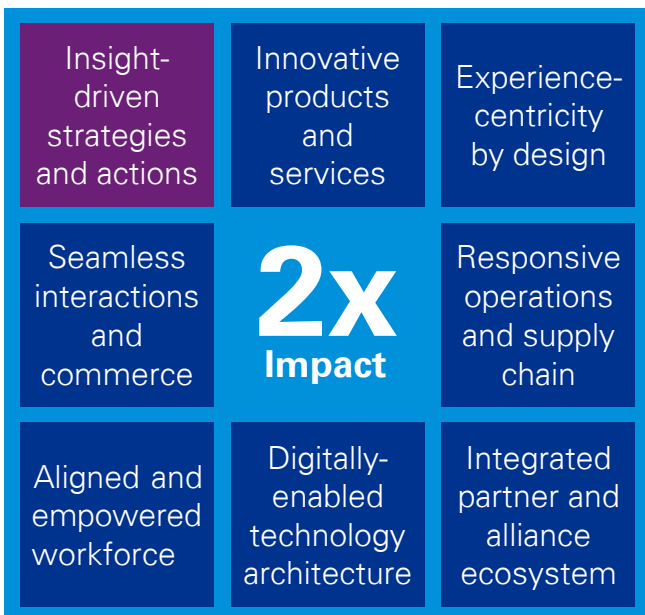
A KPMG member firm led an international consortium of experts to create two of the largest and most innovative leadership development programs in the world, involving patients in the design and delivery of content. This initiative is having clear and continuing impact on the quality of front-line patient care.

The complexities and dilemmas involved in the management of modern healthcare present some of the most difficult challenges facing our society. This project clearly illustrates what can be achieved by multi-disciplinary teams working together for a clear and shared purpose.

**We deliver results that matter.**

## What does a Connected Enterprise look like?

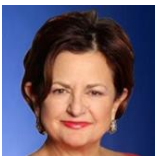
The most successful organizations exhibit eight characteristics that span all aspects of the enterprise. The capabilities of front office, middle office and back office integrate seamlessly to support the brands, products and services, interactions and workforce.



## Make the connection

- Generate business value at every stage of your transformation journey
- Build an insights-driven, digital and customer centric business
- Empower and enable your people to align the organization for agility and performance
- Engineer secure architectures to enable agile, high-speed innovation

Disclaimer: Some or all of the services described herein may not be permissible for KPMG audit clients and their affiliates or related entities.



### Miriam Hernandez-Kakol

Global Customer & Operations

**T:** +1 973 912 6227

**E:** mhernandezkakol@kpmg.com



### Stephanie Terrill

National Leader Canada, Management Consulting

**T:** +1 416 777 8994

**E:** jsterrill@kpmg.ca



### Daniel T. Ornstein

Connected Enterprise Champion Canada, Customer Practice

**T:** +1 416 777 8294

**E:** danornstein@kpmg.ca

## [home.kpmg/ca/connected](https://home.kpmg/ca/connected)

The KPMG name and logo are registered trademarks or trademarks of KPMG International. The information contained herein is of a general nature and is not intended to address the circumstances of any particular individual or entity. Although we endeavor to provide accurate and timely information, there can be no guarantee that such information is accurate as of the date it is received or that it will continue to be accurate in the future. No one should act on such information without appropriate professional advice after a thorough examination of the particular situation.

© 2019 KPMG LLP, a Canadian limited liability partnership and a member firm of the KPMG network of independent member firms affiliated with KPMG International Cooperative ("KPMG International"), a Swiss entity. All rights reserved.

Designed by CREATE | CRT112363

Throughout this document, "we", "KPMG", "us" and "our" refer to the network of independent member firms operating under the KPMG name and affiliated with KPMG International or to one or more of these firms or to KPMG International. KPMG International provides no client services. No member firm has any authority to obligate or bind KPMG International or any other member firm vis-à-vis third parties, nor does KPMG International have any such authority to obligate or bind any member firm.